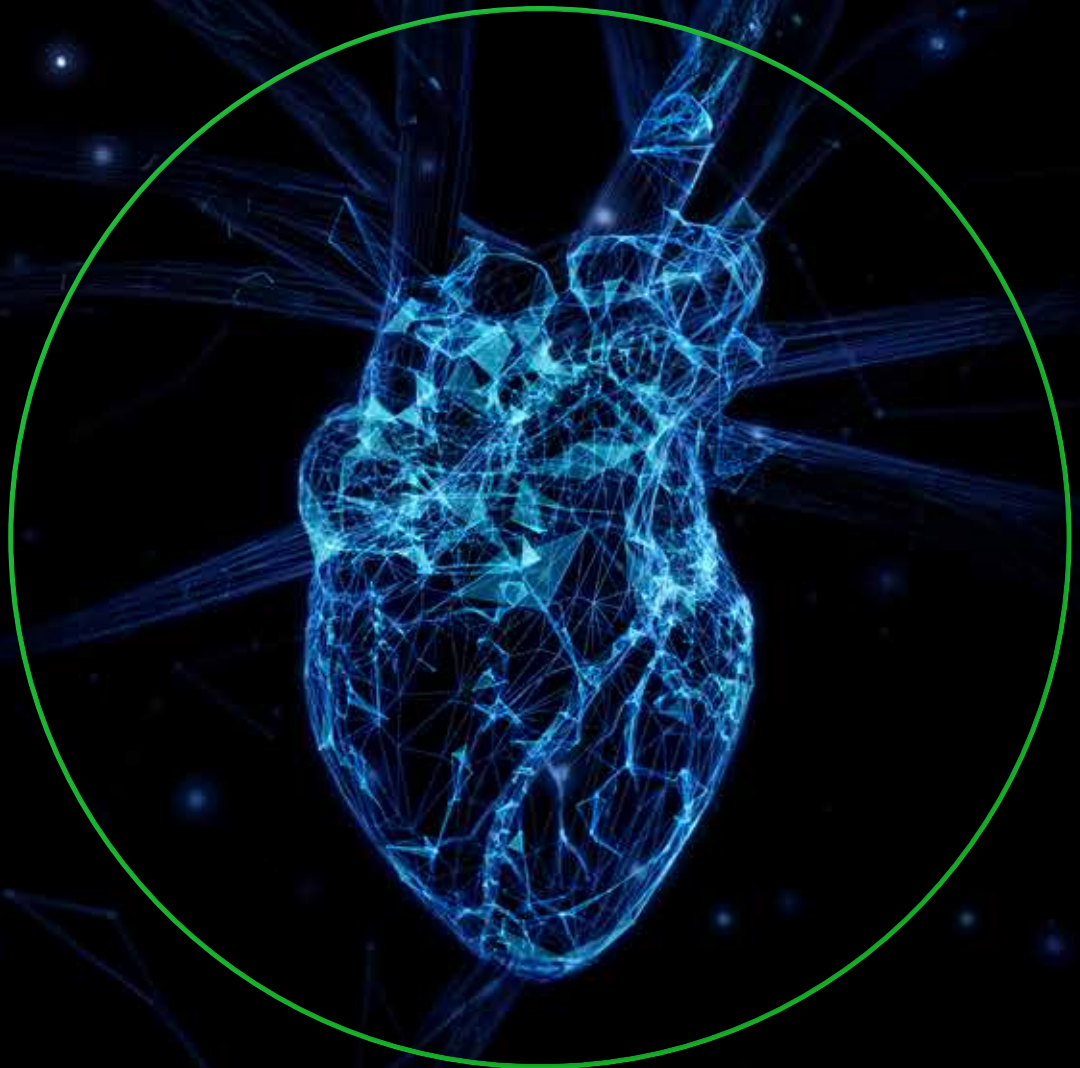


# Interoperability in Healthcare

Bridging the Data Divide for Better Care.



Companies operating in today's increasingly complex digital health landscape recognize the importance of interoperability, as it enables different information systems, devices, and applications to seamlessly access, exchange, and integrate data across organizational boundaries. For businesses, this capability is critical in breaking down data silos, improving operational efficiency, and fostering better collaboration between healthcare providers, payers, and patients.

Built on reusable, industry-adopted standards, our interoperability solutions are indispensable for companies aiming to thrive in the digital health ecosystem, ensuring streamlined communication, enhanced decision-making, and responding s wiftly to changing healthcare demands, enabling you to unlock new opportunities for growth and innovation.

By enabling seamless data exchange and integration, we empower businesses to maximize the value of their data, reduce administrative inefficiencies, and enhance patient care. Our solutions are designed to be flexible, scalable, and secure, ensuring that companies can adapt to evolving industry standards while maintaining compliance and safeguarding sensitive information.

## Challenges in the Current Digital Health Landscape

Today's healthcare system is plagued by data challenges that hinder care delivery and efficiency. Healthcare data can be classified into two broad categories: health data and administrative data. While health data involves

patient-specific information, administrative data covers details such as provider information, benefit and coverage details, etc. Some of the major issues that healthcare organizations face today include:

### Data Growth and Quality Issues:

The exponential growth of healthcare data brings quality challenges, limiting its usability and hampering the efficient exchange of information. These issues affect patient care and make it difficult to derive valuable insights.

### Real-Time Data Access and Legacy Systems:

Limited real-time data access and outdated claims systems reduce agility and slow down processes, resulting in administrative inefficiencies, delays in care delivery, and challenges in managing provider-payer interactions, along with privacy and security concerns.

### Complex Administration and Disconnected Systems:

The complexity of healthcare administration, with numerous touchpoints between payers, providers, and patients, creates inefficiencies. Siloed, disconnected systems lead to inconsistent data, fragmented workflows, and higher administrative costs.

### Cumbersome EHR Systems and Manual Processes:

Many EHR systems prioritize data logging over meaningful use, making it difficult to integrate and utilize healthcare data. Combined with manual, outdated processes, these systems lack scalability and fail to improve operational efficiency.

# Key Benefits of Interoperability Adoption in Healthcare

The increasing demand for quality care, rising healthcare costs, and evolving regulations are driving healthcare companies to adopt interoperability solutions. By partnering with Brillio, you can unlock a range of transformative benefits that improve operational efficiency and patient outcomes.

- **Improved Patient Outcomes:** Our solutions enable real-time access to patient data, enhancing the accuracy of diagnoses and treatment plans, which directly improves the quality of care.
- **Increased Operational Efficiency:** Brillio eliminates the need for manual data entry and reduces administrative overhead by enabling seamless data exchange, streamlining workflows, and improving overall efficiency.
- **Enhanced Research Capabilities:** With our solutions, companies can aggregate and analyze vast amounts of patient data, aggregate and analyze vast amounts of patient data, accelerating medical research and fostering innovation in treatment development.
- **Superior Patient Safety:** Access to comprehensive, up-to-date patient information helps reduce the risk of medical errors, ensuring a safer, more reliable healthcare experience.

- **Improved Care Coordination:** Brillio enables smooth communication and data sharing across healthcare providers, improving care coordination and ensuring patients receive timely, informed care.
- **Better Population Health Management:** By leveraging real-time patient data, companies can more effectively manage population health programs, improving outcomes for larger patient groups.

## Brillio's Interoperability Ecosystem Solutions

At Brillio, interoperability is embedded into every phase of our solutions, ensuring HIPAA compliance, data quality, governance, and security. We create scalable, flexible architectures that embrace open standards and support data reusability across multiple platforms. Our API Hub facilitates seamless data exchange, while our Consent Management solution supports population health management and clinical data exchange.

By leveraging NLP search, real-time omnichannel patient engagement, and actionable intelligence, we ensure better patient outcomes, improved clinical decision-making, and more efficient care delivery.

## Information Management

Effective information management is at the core of Brillio's interoperability solutions. We prioritize data quality management to ensure that healthcare organizations have access to accurate, usable data across all systems. Our focus on data governance and analytics provides a strong foundation for decision-making, while comprehensive API management and flexible architecture enable seamless data integration. In addition, we offer a robust data repository designed specifically for research purposes, supported by comprehensive analytics platforms that help healthcare providers glean insights from vast datasets.

## Interoperability Governance

Brillio is dedicated to setting and maintaining high standards in interoperability governance. We help organizations adopt industry standards such as HL7, FHIR, and DICOM, ensuring smooth data exchange across systems. Our compliance monitoring and certification services provide peace of mind by ensuring that all operations adhere to regulatory requirements. With HIPAA compliance and audit trails embedded in our solutions, healthcare organizations can maintain the security and privacy of sensitive data. Additionally, our policy and governance development services help institutions create and enforce robust interoperability frameworks.

## Clinical Data Exchange

Our clinical data exchange solutions are designed to optimize data flow between healthcare providers and systems. We facilitate the exchange of electronic health records (EHR) and enable Health Information Exchange (HIE)

to ensure that patient data is always accessible when needed. With real-time data exchange and direct messaging, providers can communicate more effectively and make timely decisions. Our scalable, cloud-based platforms provide flexibility, while secure authorization policies ensure that data is accessed by the right people. Additionally, our robust data transformation engine makes it easy to integrate diverse data formats from various sources.

## Patient Enablement

Brillio places a strong emphasis on patient enablement, with solutions created to enhance patient care and safety. We optimize our platforms for mobile devices and web browsers to ensure patients can engage with their healthcare providers anytime, anywhere. Multilingual support ensures that patients from diverse backgrounds can easily access and understand their medical information. By facilitating real-time provider interactions and delivering alerts, we improve communication and engagement between patients and providers. Moreover, our solutions help reduce operational costs by driving efficiencies throughout the healthcare ecosystem.

By partnering with Brillio, you gain access to a suite of advanced interoperability solutions designed to break down data silos, enhance operational efficiency, and improve patient outcomes. Our flexible, scalable, and secure platforms ensure that your organization is not only compliant with industry standards but also equipped to handle the demands of modern healthcare.



## ABOUT BRILLIO

At Brillio, our customers are at the heart of everything we do. We were founded on the philosophy that to be great at something, you need to be unreasonably focused. That's why we are relentless about delivering the technology-enabled solutions our customers need to thrive in today's digital economy. Simply put, we help our customers accelerate what matters to their business by leveraging our expertise in agile engineering to bring human-centric products to market at warp speed. Born in the digital age, we embrace the four superpowers of technology, enabling our customers to not only improve their current performance but to rethink their business in entirely new ways. Headquartered in Silicon Valley, Brillio has exceptional employees worldwide and is trusted by hundreds of Fortune 2000 organizations across the globe.



<https://www.brillio.com/>

Contact Us: [info@brillio.com](mailto:info@brillio.com)