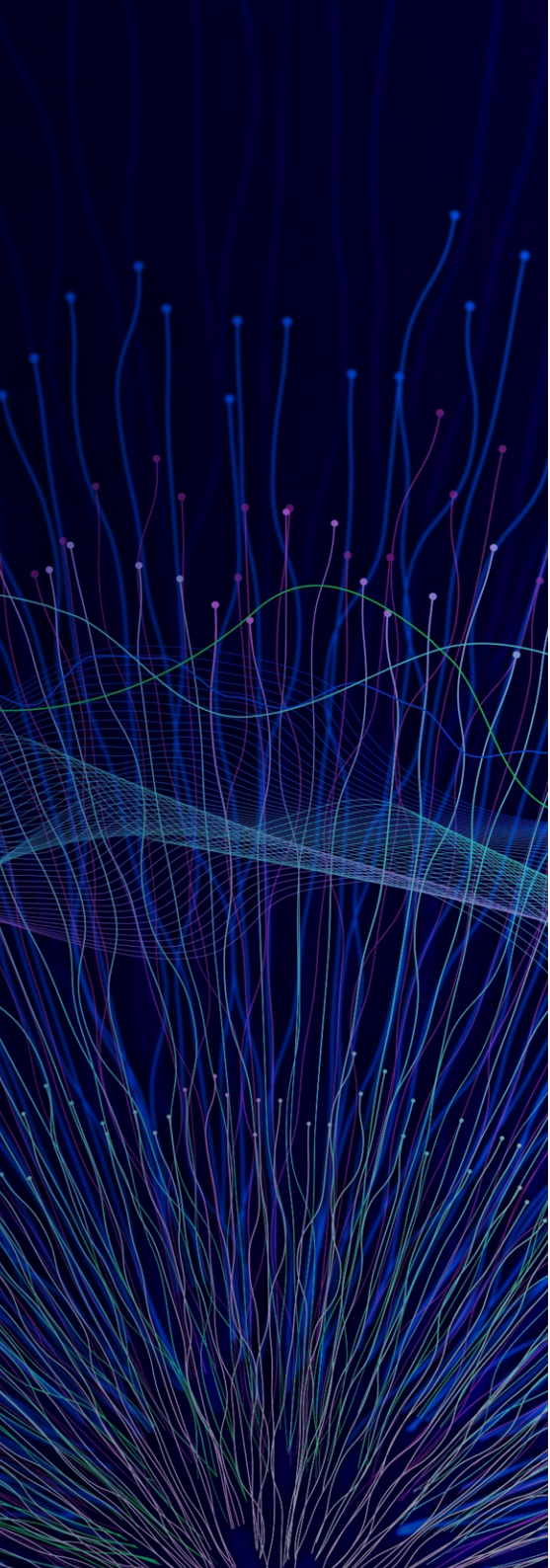


Generative AI for High-Tech

Enhance operational efficiency and customer engagement with Generative AI curated for technology industry needs.

brillio





20-50% Productivity Gains with Gen AI in Technology Industry

Generative AI technology is reshaping the landscape for High Tech companies, providing a revolutionary approach to business operations. This transformative capability allows organizations to swiftly automate processes, freeing up time for strategic endeavors and optimizing resources. The high-tech industry anticipates significant impacts, estimated between USD 240 to 460 billion. From automated coding to hyper-personalized customer engagement, Generative AI offers multifaceted advantages.

The high-tech sector encounters substantial challenges in various facets, including the intricate processes of proposal generation involving ROI analysis, precise requirement articulation and analysis, and the formulation of solution architectures aligning with specified requirements. Delays in the development phase, ensuring testing accuracy, and establishing contextually engaging customer interactions further contribute to the industry's complexities. Leveraging the data analysis capabilities

of Generative AI, which unveil patterns and insights from extensive datasets, presents a valuable solution for preemptively identifying potential issues before they escalate. The implementation of Language Models (LLMs) tailored to the specific needs of the high-tech industry can effectively address these challenges, contributing to enhanced productivity and heightened accuracy in output.

However, implementing Generative AI in the high-tech sector demands careful considerations. Organizations must deploy On-Prem Gen-AI solutions to safeguard intellectual property, govern third-party pair programming tools, and assess code coverage and security vulnerabilities. Additionally, emphasizing the collection of Zero party or first-party data in the training process and governing the use of intellectual source code in model training are essential for successful integration.



```
max_record = 0;
$template)
total_pages > $pages_max)
= floor (($pages_max - 1) / 2);
page = ($page - $range) > 1 ? $page - $range + 1;
ch_page = ($page + $range) < $total_pages ? $page +
= ($page > 1) ? 1 : false;
= ($page < $total_pages) ? $total_pages : false;
= ($page > 1) ? $page - 1 : false;
= ($page < $total_pages) ? $total_pages : false;
page; $i<=$finish_page;
['PAGE'][$i]['NUM'] = $i;
['PAGE'][$i]['ACT'] = (
emplate ($template, $var
late = '', $page = 1, $total
max_record;
records - 1;
records_per_page) return $ret;
```

The Making of a Generative High-Tech Enterprise

GenAI has the potential to offer a wide range of use cases and applications in the technology industry.

Automated Coding

Generative AI revolutionizes automated coding in the high-tech industry by seamlessly integrating into Buganizer/JIRA workflows, optimizing task management, and bolstering project efficiency. Through bug summarization, GenAI provides concise insights into identified issues, streamlining troubleshooting and resolution processes. Moreover, it pioneers automated code generation, expediting software development while ensuring the creation of efficient, high-quality code.

By integrating generative AI into code review processes, developers benefit from enhanced code quality identification, improvement suggestions, and detailed

explanations for code changes, ultimately fostering better collaboration and reducing development time. Additionally, GenAI automates documentation generation for software projects, interpreting code comments, generating API documentation, and providing explanations for complex algorithms. This not only streamlines the documentation process but also enhances project understanding and maintenance.

Gen AI aids in core product engineering by leveraging advanced algorithms and automation to streamline processes, optimize designs, and generate innovative solutions, ultimately enhancing efficiency and accelerating development cycles.

GenAI heralds a new era in software engineering, where developers witness heightened productivity, fewer errors, and enriched collaboration

Rapid Prototyping & Product Development

GenAI's Rapid Prototyping capability revolutionizes product development in the high-tech industry by swiftly creating functional prototypes. This accelerates innovation, fosters collaboration among stakeholders, and enables iterative testing, ensuring efficient development cycles and timely delivery of high-quality products. By providing a platform for rapid iteration and experimentation, GenAI facilitates the exploration of multiple design possibilities, leading to the discovery of innovative solutions.

Moreover, its integration with Product Lifecycle Management (PLM) solutions optimizes development and management processes by streamlining data, workflows, and collaboration tools across every phase of the product lifecycle. This seamless integration enhances efficiency and innovation from ideation to product retirement, ensuring that companies can adapt quickly to market demands and stay ahead of the competition. Overall, GenAI empowers high-tech companies to innovate faster, reduce time to market, and deliver products that meet and exceed customer expectations.

GenAI empowers high-tech companies to innovate faster, reduce time to market, and deliver products that meet and exceed customer expectations.

Analytics

Generative AI revolutionizes analytics in the high-tech industry by leveraging advanced algorithms to provide forecasting capabilities, predict potential failures in devices, and optimize energy efficiency in data centers. By analyzing historical data, organizations can make informed decisions, allocate resources effectively, and address challenges proactively. Implementing machine learning models enables proactive maintenance, minimizing downtime, and maximizing productivity.

Additionally, Gen AI enhances software development processes through Co-pilot, offering support and guidance to developers, automating tasks, and

facilitating collaboration. It empowers teams to deliver high-quality products faster, boosting efficiency and productivity. Furthermore, leveraging NLP/Gen AI for real-time language translation and intelligent summarization enhances remote collaboration experiences, fostering seamless communication across global teams.

Moreover, Explainable AI (XAI) ensures transparency in AI systems, providing understandable explanations for decisions. This promotes accountability, fairness, and trustworthiness, helping identify and mitigate biases to ensure ethical AI-driven processes aligned with human values.

Gen AI enhances analytics in the high-tech industry by leveraging advanced algorithms to provide predictive insights, optimize resource allocation, and facilitate transparent decision-making, driving efficiency and innovation.

Legal Lifecycle Management

Generative AI plays a crucial role in enhancing legal lifecycle management within the high-tech industry through various platforms and modules. The LLM platform offers comprehensive solutions, streamlining document management, compliance tracking, and legal process automation. Meanwhile, the LLM Ops platform automates processes, ensuring compliance, and facilitating seamless document management, thereby optimizing operations for legal teams. This leads to enhanced efficiency and accuracy in handling legal matters and workflows.

The AIOPS platform leverages artificial intelligence and IT operations to optimize performance, automate tasks, and improve decision-making in complex IT environments. This integration ensures seamless operations and proactive issue resolution. Additionally, the LLM Validation module automates validation tasks, enhancing efficiency and reliability. By doing so, it ensures that legal operations comply with regulatory standards and organizational requirements, ultimately minimizing risks and enhancing overall effectiveness in legal lifecycle management processes.

Gen AI optimizes Legal Lifecycle Management by streamlining processes, enhancing compliance, and improving efficiency through automation and intelligent decision-making

Personalized Customer Engagement

Generative AI revolutionizes Personalized Customer Engagement in the high-tech industry through precise customer segmentation, churn prediction, market trend analysis, propensity modeling, and enhanced customer support. By leveraging advanced analytics and data patterns, it optimizes marketing efforts, tailoring messages and offerings to specific customer groups for increased engagement and conversion. Additionally, churn prediction models enable proactive retention strategies, reducing customer attrition and ensuring business sustainability. Market trend analysis

provides valuable insights into consumer behavior and industry dynamics, facilitating informed decision-making. Propensity modeling allows for targeted marketing and personalized recommendations, further optimizing outcomes. Moreover, through intelligent automation and analytics, Gen AI enhances the efficiency of customer support teams, facilitating swift issue resolution and improving customer satisfaction with personalized support experiences. Overall, Gen AI enhances customer engagement, retention, and satisfaction, driving business growth and success.

Gen AI enhances customer engagement, retention, and satisfaction, driving business growth and success.

Cyber Security

GenAI's cyber solution employs advanced algorithms to enable real-time anomaly identification, enhancing cybersecurity posture by swiftly detecting suspicious activities and potential threats across digital systems. This proactive approach mitigates risks and ensures rapid response to emerging threats, safeguarding critical assets and data. By utilizing machine learning algorithms to establish a baseline of normal network behavior and identify anomalies in real-time, GenAI

automates detection, analysis, and remediation processes. This minimizes the impact of security breaches, enhances threat intelligence, and fortifies defenses, thereby ensuring robust protection of sensitive data and assets. Ultimately, GenAI's cyber solution enhances overall security resilience, providing organizations with the confidence to navigate today's complex threat landscape while maintaining the integrity and confidentiality of their digital infrastructure.

GenAI's cyber solution enhances overall security resilience, providing organizations with the confidence to navigate today's complex threat landscape while maintaining the integrity and confidentiality of their digital infrastructure

High-tech companies have a significant opportunity in leveraging Generative AI across product development, analytics legal lifecycle management, CX and cyber security. We at Brillio could help you assess your readiness with our proprietary Generative AI Readiness index across various dimensions such as strategy, data quality, adoption, governance, LLMOps and CVOps and identify gaps to attain the desired state. We help bridge the gaps identified with a team of cross-skilled professionals that consists of Solution Consultants, Data Scientist, Prompt Engineer, Responsible AI Consultant, Generative AI Ethics Officer, Generative AI and Human Coordinator and Generative AI Bias Detective. Our solution has governance baked in with the principles of Justness, Transparency, Privacy, Compliance, Grounding and Evaluation coupled with domain specific cognizance & validation of Legal, Regulations, Ethics and Policies provide a full coverage. At the end of it all, you get to enjoy faster time to market with our domain-specific technology accelerators for data understanding, model exploration and management.

Connect with us for a readiness assessment.

ABOUT BRILLIO

Brillio is one of the fastest growing digital technology service providers and the partner of choice for many Fortune 1000 companies seeking to turn disruptions into competitive advantages through innovative digital adoption. We help clients harness the transformative potential of the four superpowers of technology: cloud computing, Internet of Things (IoT), artificial intelligence (AI) and mobility. Born digital in 2014, we apply our expertise in customer experience solutions, data analytics and AI, digital infrastructure and security, and platform and product engineering to help clients quickly innovate for growth, create digital products, build service platforms, and drive smarter, data-driven performance. With 17 locations across the US, the UK, Romania, Canada, Mexico, and India, our growing global workforce of nearly 6,000 Brillians blends the latest technology and design thinking with digital fluency to solve complex business problems and drive competitive differentiation for our clients. Brillio was certified by Great Place to Work in 2021, 2022 and 2023.



<https://www.brillio.com/>

Contact Us: info@brillio.com